

Skyline CCW-1

Compact & Rugged Dual-band WIFI Antenna

- Compact design combined with high performance antenna element
- Separated RF adapter and cable design for installation flexibility
- Apply weather-resistance antenna enclosure material for harsh environment



The CCW-1 is a compact and rugged industrial-grade antenna with 2.4G and 5.5G WIFI coverage. The outstanding antenna efficiency on both bands and water ingress design make it easy to install and meet commercial and industrial standards.



Proprietary Design

CCW-1's unique radome design ensures the operability and RF radiation.



Seamless, Integrally Formed Radome

The housing provides full coverage to the base, allowing excellent water-proof capability. The design is also highly tamper-proof.



Central Mount with Extended Cable

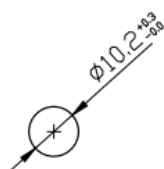
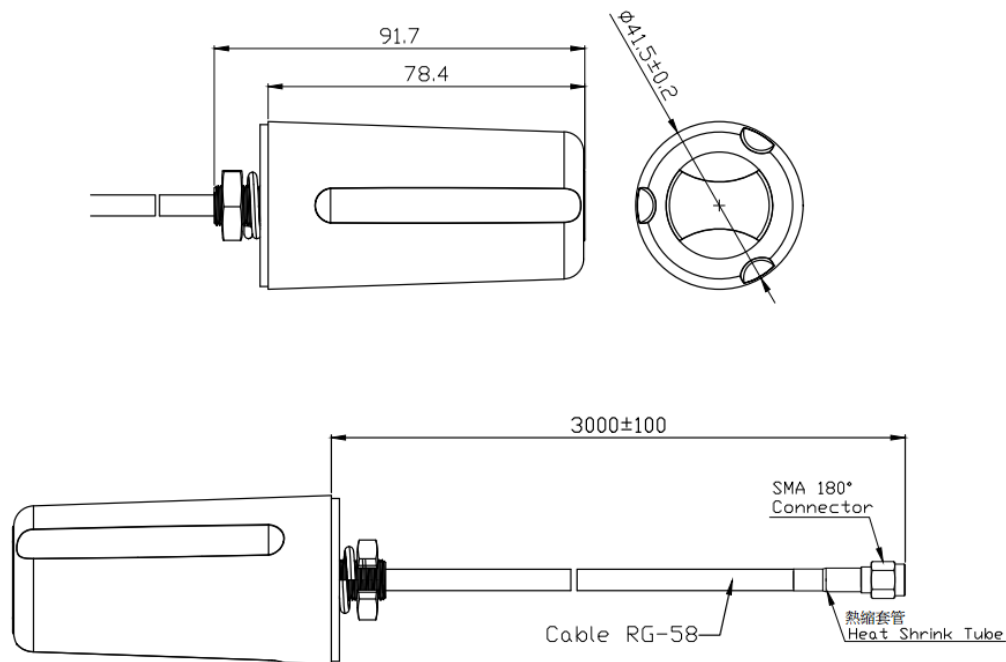
CCW-1 has central mount N-type female connector, can be connected to an corresponded adapter cable, enabling flexible setup.



Ground Independent

CCW-1 is ground independent for fixing on any surface with consistent performance.

Drawing

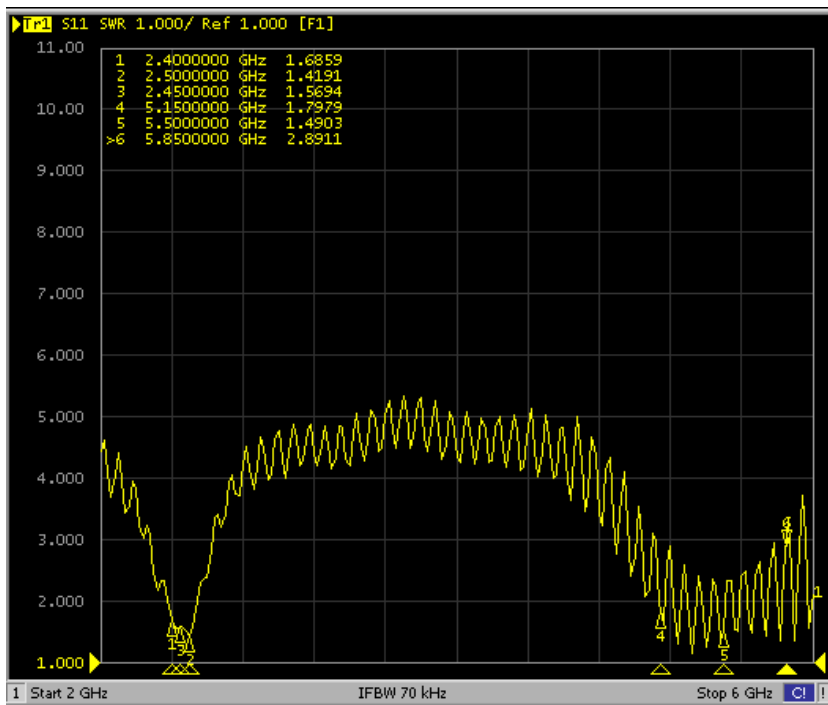


Recommended size for installation hole

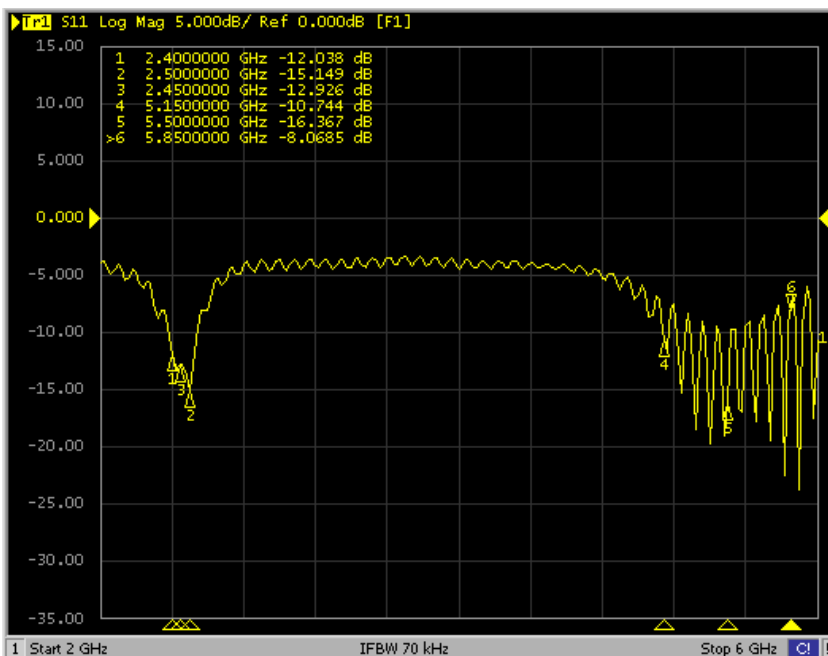
Electrical Specification		Mechanical Specification	
Frequency	2400~2485MHz; 5150~5850MHz	Dimension	97.5 x 41.5 (dia.) mm
Gain	4.0 dBi (2.4G) 2.0 dBi (5.5G)	Weight	84.5g
Impedance	50 ohm	Mounting	Central mount
Efficiency	80% (2.4G) 60% (5.5G)	Connector/Cable	SMA(SP)+RG58 cable
VSWR	< 2.0	Radome Material	ASA
Polarization	Linear	Operating Temperature	-35°C to 85°C
		Storage Temperature	-40°C to 85°C

* Specifications are subject to change without prior notice.

VSWR



Return Loss



* Specifications are subject to change without prior notice.

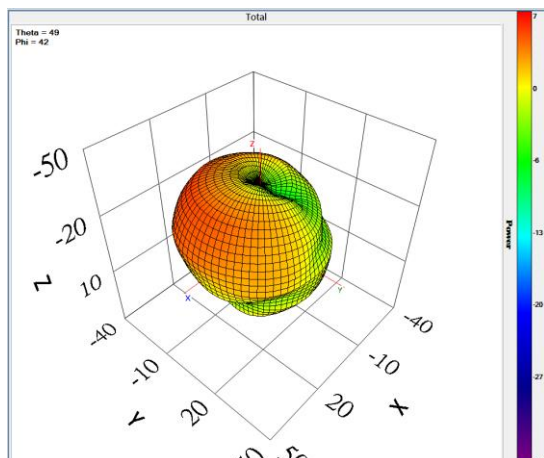
3D Chamber Test Result

Frequency (MHz)	2400	2420	2440	2460	2480	2500
Peak Gain (dBm)	4.32	4.63	4.65	4.52	4.35	4.41
Efficiency (%)	81.82	83.03	79.24	76.77	73.57	74.07

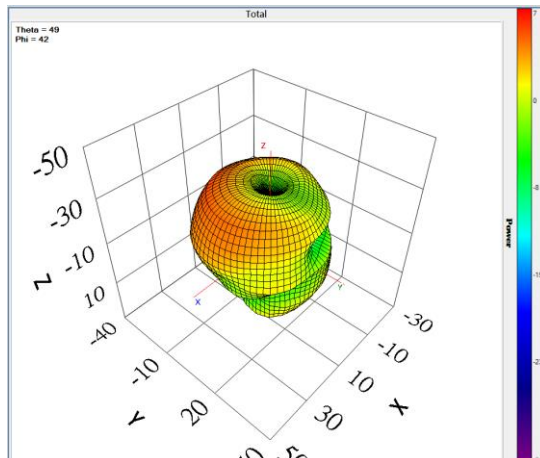
Frequency (MHz)	5150	5250	5350	5450	5500	5650	5750
Peak Gain (dBm)	1.66	1.73	1.81	2.07	2.3	2.8	2.61
Efficiency (%)	49.45	51.7	56.1	59.71	61.72	64.04	58.55

Radiation Polarization

2.4GHz



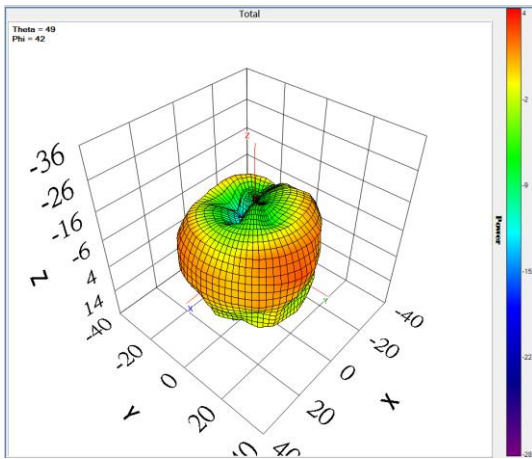
2.5GHz



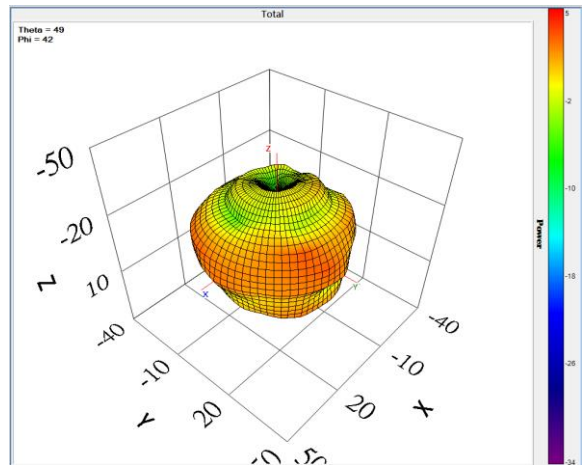
* Specifications are subject to change without prior notice.

Radiation Polarization

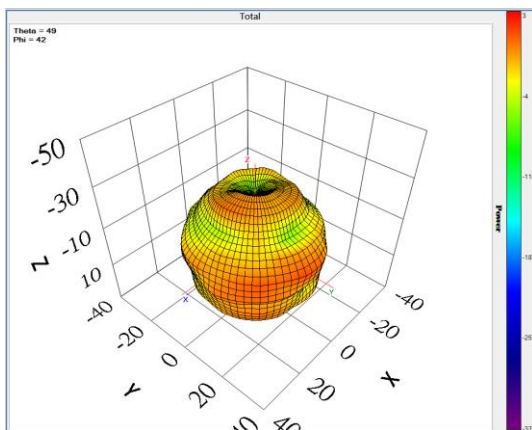
5.15GHz



5.5GHz



5.85GHz



* Specifications are subject to change without prior notice.